



# THE CROSS *and* CROWN

*"No Cross, No Crown"*

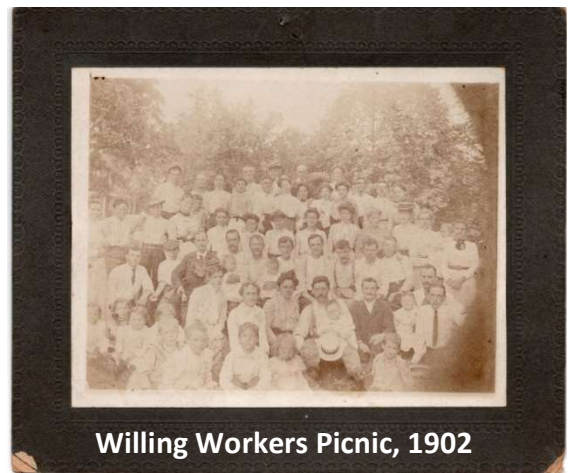
a publication of Highway Mission Tabernacle and Resurrection Life Church, Philadelphia, PA

Edition LXXXVIII | October 27, 2024 copyright ©2024, Highway Mission Tabernacle

One of the under-told stories in the Gospel is that of the women who accompanied Jesus on his journeys, caring for his needs and supporting his mission out of their own pockets. Although their story takes up only a handful of verses in the Gospels (See Matthew 27:55, Mark 14:40,41 and Luke 8:2,3), it is undeniable that they were called by God to fulfill a crucial role in Jesus' ministry.

Back in the 1990s, I was amazed at the way that, although Highway had only a small congregation, God saw to it that we had people to fill every need in a church, from Herman Bullwinkle, who could fix just about anything and kept that old boiler (and everything else!) running for years and years, to skilled musicians, Sunday school teachers, children's workers, bookkeepers and ushers – all volunteering their time, talents and resources to make ministry possible week in and week out.

Highway will always tell the story – and rightfully so – of Bro. Frederick Reel, our first pastor, who served for 20 years without taking a salary. At the same time, let us not forget the countless other volunteers whom God has sent to Highway, who labored faithfully in the background and at their own expense, and without whom we would not be here today. Our archivist – herself a volunteer, who secured a grant that enabled her to catalog and preserve around 10,000 artifacts of Highway's history – has been highlighting the stories of several individuals in our past whose names have not been passed down. We are in the process of putting together a blog, and you'll be hearing more about them.



All of you who are reading this are a part of Highway's story – past, present and future. For all of your labors, for all of your prayers and for all of your support, we offer our sincerest thanks. Our gratitude, however great, cannot compare with the magnitude of your giving, but neither can it compare with the true reward that's ahead of you, when you hear God's "Well done!"

*We always thank God, the Father of our Lord Jesus Christ, when we pray for you.*

*(Colossians 1:3)*

# Thanks for Praying!

We appreciate your prayers as we continue to follow the path God has set before us. Please continue to agree with us for:

- God to prepare the soil as we get ready for fall and early winter outreach events,
- more of his Spirit, wisdom and direction,
- the next generation of leaders and team members,
- provision for the many challenges around us and ahead of us.

## We're praying with you!

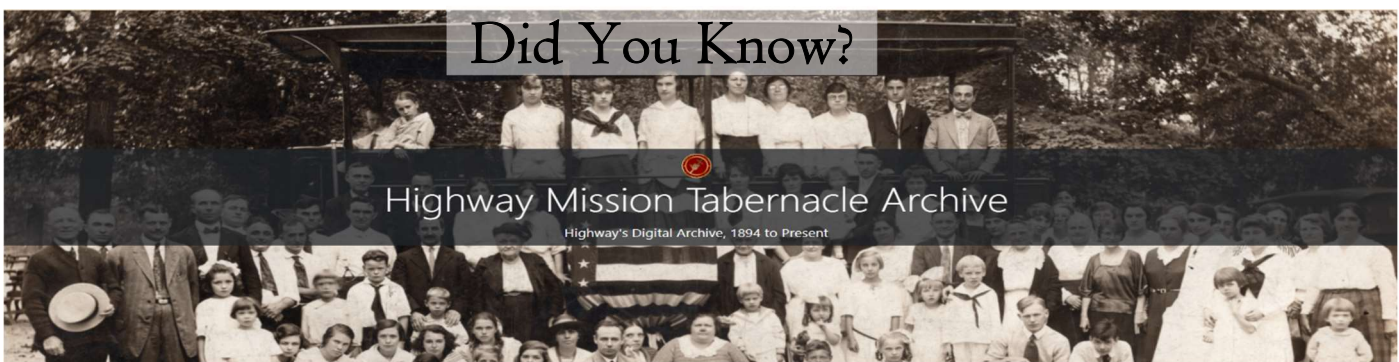
If you're on our mailing list\*, you're on our prayer list! If there's anything specific that we can join with you in praying for, please let us know. (We will only publish your requests in this newsletter with your permission.)

**Our 130<sup>th</sup> anniversary celebration is less than a month away! Please contact us if you'd like to attend, and if you have memories to share with us about Highway!**

✉	PO Box 15191 Philadelphia, PA 19130
🌐	17 <sup>th</sup> & Tioga Streets (3501 N 17 <sup>th</sup> Street) Philadelphia, PA 19140
📞	Church/Academy Office: (215) 226-1000
💻	Welcome@ResLife.AG

\* **Important:** If you'd rather not be on our mailing list, we won't be offended! Just call or write us, and we'll remove you. (We'll still keep you on our prayer list!)

If you'd rather receive this letter via e-mail, please let us know, or subscribe to it at [crossandcrown.online/subscribe](https://crossandcrown.online/subscribe) !



We have published a working draft of Highway's archives! Although we're still making corrections to it, the information is so valuable that we wanted to make it available to the public. You can access it at <https://hwy.ag/archives>. Please send comments, questions and corrections to [archivist@highwaytabernacle.org](mailto:archivist@highwaytabernacle.org).



Highway Mission Tabernacle ♦ Resurrection Life Church ♦ PO Box 15191 Philadelphia, PA 19130  
Welcome@ResLife.AG ♦ Church: (215) 226-1000 ♦ Otis: (215) 266-5976  
HighwayTabernacle.org ♦ ResLife.AG ♦ Sunday services at Noon: ResLife.stream

Archived Issues: <https://CrossAndCrown.online>